



# VIXIA HF R60 VIXIA HF R62 VIXIA HF R600

## Package Contents

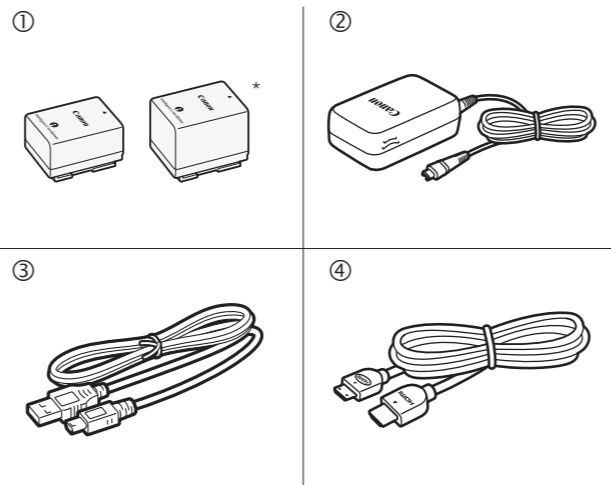
- HD Camcorder  
VIXIA HF R60 / VIXIA HF R62 / VIXIA HF R600
- BP-718 Battery Pack or BP-727 Battery Pack\* [①]
- CA-110 Compact Power Adapter [②]  
(CA-110E, including power cord, in Asia)
- IFC-300PCU/S USB Cable [③]
- HTC-100/S High Speed HDMI Cable [④]
- Transfer Utility LE Startup Guide

\*HF R62 only.

## 1 Installing the Camcorder's Instruction Manual (PDF File)

This guide only introduces the most basic functions of the camcorder to get you started. To learn more about your camcorder, to read important handling precautions and to consult the troubleshooting section if an error message is displayed, be sure to read the full-version Instruction Manual (PDF file\*). Access the following Web site. Click on your country/region and follow the onscreen instructions to download the PDF file.

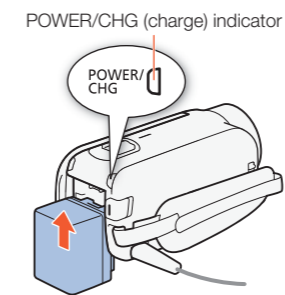
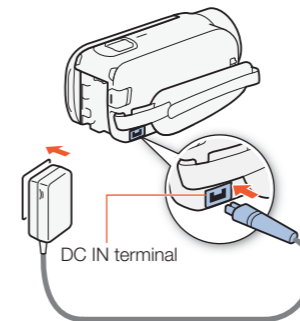
<http://www.canon.com/icpd/>



## 2 Charging the Battery Pack

Charge the supplied battery pack in advance. Fully charging the supplied battery pack will take about 5 hours 35 minutes (7 hours and 45 minutes for the BP-727 Battery Pack supplied with the HF R62 only).

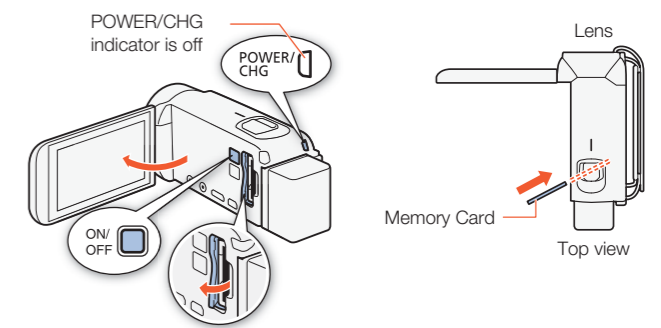
1. Plug the compact power adapter into a power outlet and connect it to the camcorder's DC IN terminal.
  - For Asia only: Connect the power cord to the compact power adapter before plugging the power cord into the power outlet.
2. Attach the battery pack to the camcorder.
  - Press the battery pack softly into the battery attachment unit and slide it up until it clicks in place.
3. Charging will start when the camcorder is turned off.
  - The POWER/CHG indicator will turn on in red (battery pack charging). When the red POWER/CHG indicator goes out, the battery pack is fully charged.
4. When the battery pack is fully charged, disconnect the compact power adapter from the camcorder and then from the power outlet.



## 3 Inserting a Memory Card

You can use commercially available SD, SDHC and SDXC cards with this camcorder. We recommend using memory cards rated CLASS 4, 6 or 10. Initialize a memory card before using it with the camcorder for the first time (PDF Initializing the Memory).

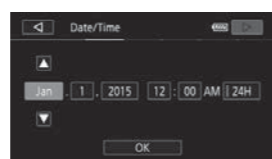
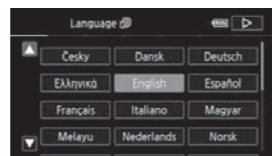
1. Open the LCD panel.
  - The camcorder will turn on and the first screen of the basic setup will appear.
2. Press [ON/OFF] to turn off the camcorder.
  - Make sure the POWER/CHG indicator is off.
3. Open the memory card slot cover and insert the memory card.
  - Insert the memory card at a slight angle, with the label facing toward the lens.
4. Close the memory card slot cover.



## 4 Basic Setup

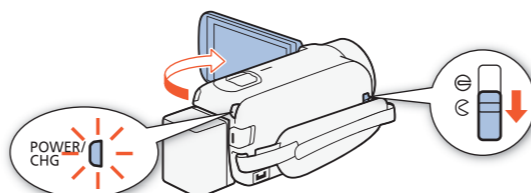
The first time you turn on the camcorder, you will be guided by the camcorder's basic setup screens to select the camcorder's initial settings, such as the language, date and time, movie format, etc.

1. Turn on the camcorder.
  - Open the LCD panel or press [ON/OFF].
2. Touch the desired language for onscreen displays and then touch [▷].
3. Touch the desired date/time format and then touch [▷].
4. Set the date and time.
  - Touch a field you want to change and touch [▲] or [▼] to change. Repeat as necessary.
  - Touch [24H] to use 24-hour clock or leave untouched to use AM/PM.
5. Touch [OK] and then touch [▷].
6. Touch [AVCHD] or [MP4] to select the movie format and then touch [▷].
  - HF R62/R60 After you select the movie format, you need to select the memory to be used for recording movies (step 7) and photos (step 8).
  - HF R600 No further settings are necessary. Skip to step 9.
7. Touch [ ] (built-in memory) or [SD] (memory card) and then touch [▷].
8. Touch [ ] (built-in memory) or [SD] (memory card) and then touch [▷].
9. Touch [OK] to complete the basic setup and close the setup screen.

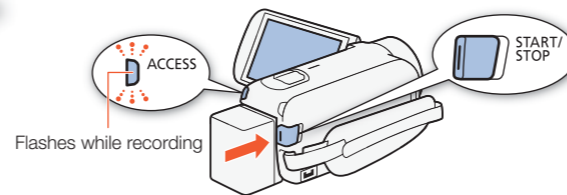


## 5 Shooting Video and Taking Photos

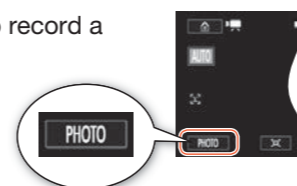
1. Turn on the camcorder and open the lens cover.
  - Open the LCD panel or press [ON/OFF] and then slide down the lens cover switch.



2. Video: Press [START/STOP] to start recording video. Press again to stop recording.



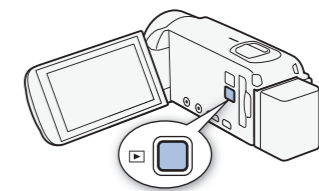
Photos: Touch [PHOTO] to record a photo.



3. When you finish recording, close the lens cover and turn off the camcorder.

## 6 Playing Back Video and Viewing Photos

1. Press the [ ] button.
  - The [ ] index screen will open. To play back different content, change the index screen.
    - [ ] [ ] Photo Playback for the [ ] (photos) index screen.
    - [ ] [ ] Baby Album for the [ ] index screen (only scenes recorded in Baby mode).
    - [ ] [ ] Video Snapshot for the [ ] index screen (only AVCHD video snapshot scenes).



2. Touch the thumbnail of the scene or photo you want to play back.
  - During playback, touch the screen to display the playback controls.

To change the memory\* or movie format From the index screen:

1. Touch the index screen button (next to the [ ] (Home) button).
2. Select the memory\* ( [ ] or [SD] ) and/or movie format (AVCHD or MP4) of the recordings you wish to play back and then touch [OK].

\*HF R62/R60 only.

To delete recordings From the index screen:

1. Touch [Edit] [ ] [Delete].
2. Select whether to delete scenes/photos by date/folder, selected scenes/photos, or all scenes/photos.
  - To select individual recordings: touch all the scenes/photos you wish to delete to mark them with a [ ], then touch [OK].
3. Touch [Yes] [ ] [OK].

## HF R62/R60 Wi-Fi Functions

The camcorder features a number of convenient Wi-Fi functions that will allow you to use it in combination with Wi-Fi enabled smartphones and tablets. For example, you can use a smartphone or tablet to control the camcorder remotely while recording, or to upload recordings to the Web.

You can also use the NFC function to effortlessly connect the camcorder to an NFC-enabled Android device.



1. If necessary, install the required app on the smartphone or tablet.
2. Select the desired Wi-Fi function on the camcorder.
3. Wirelessly connect the device to the camcorder.

Note: The necessary procedure may differ according to the Wi-Fi function you wish to use. For details, be sure to refer to the PDF Instruction Manual ([PDF](#)) **Wi-Fi Functions**.

## Optional Accessories

Canon offers a wide range of optional accessories for your camcorder. For details, be sure to refer to the PDF Instruction Manual ([PDF](#)) **Optional Accessories**.

### Use of genuine Canon accessories is recommended.

This product is designed to achieve excellent performance when used with genuine Canon accessories. Canon shall not be liable for any damage to this product and/or accidents such as fire, etc., caused by the malfunction of non-genuine Canon accessories (e.g., a leakage and/or explosion of a battery pack). Please note that this warranty does not apply to repairs arising out of the malfunction of non-genuine Canon accessories, although you may request such repairs on a chargeable basis.

This mark identifies genuine Canon video accessories. When you use Canon video equipment, we recommend Canon-brand accessories or products bearing the same mark.



## IMPORTANT SAFETY INSTRUCTIONS



**CAUTION:**  
TO REDUCE THE RISK OF ELECTRIC SHOCK, DO NOT REMOVE COVER (OR BACK). NO USER-SERVICEABLE PARTS INSIDE. REFER SERVICING TO QUALIFIED SERVICE PERSONNEL.



The lightning flash with arrowhead symbol, within an equilateral triangle, is intended to alert the user to the presence of uninsulated "dangerous voltage" within the product's enclosure, that may be of sufficient magnitude to constitute a risk of electric shock to persons.



The exclamation point, within an equilateral triangle, is intended to alert the user to the presence of important operating and maintenance (servicing) instructions in the literature accompanying the product.

## Important Safety Instructions

In these safety instructions the word "apparatus" refers to the Canon HD Camcorder VIXIA HF R62 / VIXIA HF R60 / VIXIA HF R600 and all its accessories.

- 1 Read these instructions.
- 2 Keep these instructions.
- 3 Heed all warnings.
- 4 Follow all instructions.
- 5 Do not use this apparatus near water.
- 6 Clean only with dry cloth.

- 7 Do not install near any heat sources such as radiators, heat registers, stoves, or other apparatus (including amplifiers) that produce heat.
- 8 Protect the power cord from being walked on or pinched particularly at plugs, convenience receptacles, and the point where they exit from the apparatus.
- 9 Only use attachments/accessories specified by the manufacturer.
- 10 Unplug this apparatus during lightning storms or when unused for long periods of time.
- 11 Refer all servicing to qualified service personnel. Servicing is required when the apparatus has been damaged in any way, such as power-supply cord or plug is damaged, liquid has been spilled or objects have fallen into the apparatus, the apparatus has been exposed to rain or moisture, does not operate normally, or has been dropped.

CA-110 identification plate is located on the bottom.

CAN ICES-3(B)/NMB-3(B)

## Important Usage Instructions

### FCC/IC NOTICE

#### HD Camcorder, ID0046 / ID0048 systems

This device complies with Part 15 of the FCC Rules. Operation is subject to the following two conditions: (1) This device may not cause harmful interference, and (2) this device must accept any interference received, including interference that may cause undesired operation.

Note: This equipment has been tested and found to comply with the limits for class B digital device, pursuant to Part 15 of the FCC Rules. These limits are designed to provide reasonable protection against harmful interference in a residential installation. This equipment generates, uses and can radiate radio frequency energy and, if not installed and use in accordance with the instructions, may cause harmful interference to radio communications. However, there is no guarantee that interference will not occur in a particular installation. If this equipment does cause harmful interference to radio or television reception, which can be determined by turning the equipment off and on, the user is encouraged to try to correct the interference by one or more of the following measures:

- Reorient or relocate the receiving antenna.
- Increase the separation between the equipment and receiver.
- Connect the equipment into an outlet on a circuit different from that to which the receiver is connected.
- Consult the dealer or an experienced radio/TV technician for help.

Use of shielded cable is required to comply with class B limits in Subpart B of Part 15 of FCC Rules. Do not make any changes or modifications to the equipment unless otherwise specified in the manual. If such changes or modifications should be made, you could be required to stop operation of the equipment.

#### Model ID0046 (including WLAN Module Model WM217, FCC ID: AZD217)

This device complies with Industry Canada license-exempt RSS standard(s). Operation is subject to the following two conditions: (1) this device may not cause interference, and (2) this device must accept any interference, including interference that may cause undesired operation of the device.

This transmitter must not be co-located or operated in conjunction with any other antenna or transmitter.

The available scientific evidence does not show that any health problems are associated with using low-power wireless devices. There is no proof, however, that these low power wireless devices are absolutely safe. Low-power wireless devices emit low levels of radio frequency energy (RF) in the microwave range while being used. Whereas high levels of RF can produce health effects (by heating tissue), exposure to low-level RF that does not produce heating effects causes no known adverse health effects. Many studies of low-level RF exposures have not found any biological effects. Some studies have suggested that some biological effects might occur, but such findings have not been confirmed by additional research. This model has been tested and found to comply with FCC/IC radiation exposure limits set forth for an uncontrolled equipment and meets the FCC radio frequency (RF) Exposure Guidelines and RSS-102 of the IC radio frequency (RF) Exposure rules.

Canon U.S.A., Inc.  
One Canon Park, Melville, NY 11747, USA  
Tel No. 1-800-OK-CANON (1-800-652-2666)

### WARNING

TO REDUCE THE RISK OF FIRE OR ELECTRIC SHOCK, DO NOT EXPOSE THIS PRODUCT TO RAIN OR MOISTURE.

To reduce the risk of electric shock, do not place objects filled with liquids, such as vases, on the apparatus.

The Mains plug is used as the disconnect device. The Mains plug shall remain readily operable to disconnect the plug in case of an accident.

While using the compact power adapter, do not wrap it or cover it with a piece of cloth, and do not place it in confined narrow spaces.

### Precautions About the Battery Pack

#### DANGER!

#### Treat the battery pack with care.

- Keep it away from fire (or it might explode).
- Do not expose the battery pack to temperature higher than 60 °C (140 °F). Do not leave it near a heater or inside a car in hot weather.
- Do not try to disassemble or modify it.
- Do not drop it or subject it to shocks.
- Do not get it wet.

### Important Note About Accessing the Memory

- Observe the following precautions while the ACCESS indicator is on or flashing. Failing to do so may result in permanent data loss or damage to the memory.
  - Do not open the memory card slot cover.
  - Do not disconnect the power source or turn off the camcorder.
  - Do not change the camcorder's shooting mode.
  - Do not press the button.
  - When a USB cable is connected to the camcorder, do not disconnect the USB cable.

### REGIONS OF USE

The VIXIA HF R62 and VIXIA HF R60 are in compliance (as of January 2015) with the radio signal regulations of the regions listed below. For details on other regions where it can be used, make inquiries with the contacts listed inside the blue frame at the bottom of this page.

#### REGIONS

Canada, Hong Kong S.A.R., South Korea, Taiwan, USA

#### Model

ID0046: VIXIA HF R60 / VIXIA HF R62

## Canon

Canon Inc. 30-2, Shimomaruko 3-chome, Ohta-ku, Tokyo 146-8501, Japan

### ASIA

#### CANON HONGKONG COMPANY LTD.

19/F, The Metropolis Tower, 10 Metropolis Drive, Hunghom, Kowloon, Hong Kong  
Tel: +852 3191 2333, Fax: +852 2428 3963

### CANADA

#### CANON CANADA INC.

6390 Dixie Road, Mississauga, ON L5T 1P7

- ❖ If you have any questions, call the Canon Canada Information Center toll free (in Canada only) at 1-800-OK-CANON (1-800-652-2666).
- ❖ Si vous avez des questions, veuillez téléphoner 1-800-OK-CANON (1-800-652-2666, sans frais au Canada seulement).

### CENTRO Y SURAMÉRICA

#### CANON LATIN AMERICA, INC.

One Canon Park, Melville, NY 11747 USA

### Trademark Acknowledgements

- SD, SDHC and SDXC Logos are trademarks of SD-3C, LLC.
- HDMI, the HDMI logo and High-Definition Multimedia Interface are trademarks or registered trademarks of HDMI Licensing LLC in the United States and other countries.
- Manufactured under license from Dolby Laboratories. "Dolby" and the double-D symbol are trademarks of Dolby Laboratories.
- Wi-Fi is a registered trademark of the Wi-Fi Alliance.
- Wi-Fi Certified, WPA, WPA2, and the Wi-Fi Certified logo are trademarks of the Wi-Fi Alliance.
- The N-Mark is a trademark or registered trademark of NFC Forum, Inc. in the United States and in other countries.
- Other names and products not mentioned above may be trademarks or registered trademarks of their respective companies.
- This device incorporates exFAT technology licensed from Microsoft.
- "Full HD 1080" refers to Canon camcorders compliant with high-definition video composed of 1,080 vertical pixels (scanning lines).
- This product is licensed under AT&T patents for the MPEG-4 standard and may be used for encoding MPEG-4 compliant video and/or decoding MPEG-4 compliant video that was encoded only (1) for a personal and non-commercial purpose or (2) by a video provider licensed under the AT&T patents to provide MPEG-4 compliant video. No license is granted or implied for any other use for MPEG-4 standard.



### To display the camcorder's certification logos

Touch [] ➤ [Other Settings] ➤ [] ➤ [Certification Logo Display].

#### HF R600

This product is not guaranteed to support FlashAir card functions (including wireless transfer). In case of an issue with a FlashAir card, please check with the card manufacturer. Also note that approval is required to use FlashAir cards in many countries or regions. Without approval, use of the card is not permitted. If it is unclear whether the card has been approved for use in the area, please check with the card manufacturer.

### COPYRIGHT WARNING:

Unauthorized recording of copyrighted materials may infringe on the rights of copyright owners and be contrary to copyright laws.

### USA and Canada only:

The Lithium ion/polymer battery that powers the product is recyclable. Please call 1-800-8-BATTERY for information on how to recycle this battery.



The information in this guide is verified as of January 2015. Specifications and outer appearance are subject to change without previous notice.